



MASTERLINE 8 SOFTTONE – WINDOW

BIM MODELS



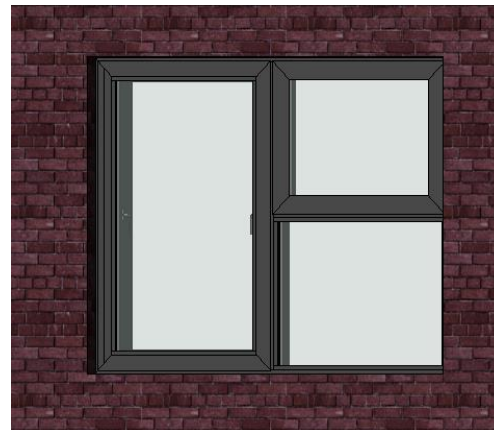
MASTERLINE 8 SOFTTONE – BIM MODELS

Building Information Modelling (BIM) is an intelligent 3D model-based process where building information is shared between all members involved in the building process. AEC professionals like architects, engineers, general contractors and fabricators use BIM to plan, design, construct and build in a more efficient way. Architects can use the Reynaers BIM models from the start of the conceptual design stage, for better visualization, all the way to the realisation of the building, generating window schedules with detailed info on the used elements.

The Reynaers BIM models are completely parametric and include different design types, building connections and optional add-ons such as sills and shutters.

All models are downloadable on the Reynaers architect website and the website of Bimobject.

On the next sheets, it's possible to find the guidelines for using the Reynaers BIM-models.



MASTERLINE 8 SOFTTONE – WINDOW

Thermal insulation	$U_f = 1.5 \text{ W/m}^2\text{K}$ for 149mm, depending on the frame/vent combination and glazing thickness
Air tightness	Up to 600 Pa (Class 4)
Water tightness	Up to 1200 Pa (Class E1200) + dynamic pulses
Wind load resistance	Up to 2400 Pa (Class E2400A)
Acoustic performance	$RW (C;Ctr) = 42 (-2;-4) \text{ dB}$, depending on the glazing type

WINDOW

6 MODELS

- Single Vent
- Top: SoftTone, Bottom: Fixed
- Double Vent: SoftTone and fixed
- Double Vent: SoftTone and outward opening
- Top: SoftTone, Bottom: Fixed, Sidelight: Outward opening
- Top: Outward opening, Bottom: Fixed, Sidelight: SoftTone

Download:



OPTIONS INSIDE THE MODEL

BUILDING CONNECTION

- Wall Exterior Width
- Offset
- Rebate
- Joint Width

SEGMENTS AND FITTINGS

- Different frame options
- Article numbers

DIMENSIONS

- Height and width opening
- Dimensions element
- Surface element
- Dimensions Glass
- Surface Glass
- Panel thickness
- Handle height

MATERIALS

- Color profile
- Panel material

ANALYTICAL PARAMETERS

- Information parameters similar to information on website

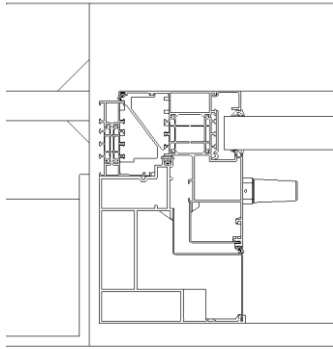
LEVEL OF DETAIL

- Coarse/medium/fine

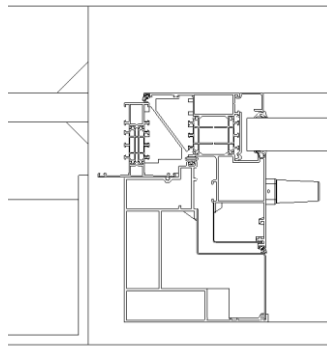
SEGMENTS AND FITTINGS PARAMETERS

Profile Frame

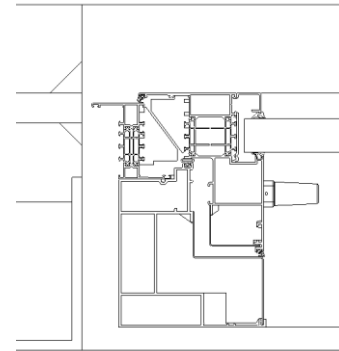
- Option to choose between three different profiles



STANDARD



T PROFILE



Z PROFILE

Profile – Article Number

- Information about all the article numbers for the used profiles and handles.

DIMENSION PARAMETERS

Opening Wall

- Height: Visible opening in outside wall
- Width: Visible opening in outside wall

Dimensions Element

- Automatic calculations of the height and width of the element
- Automatic calculations of the surface of the element
- Options to change the height and width of the different parts of the configuration

Additional Dimensions

- Height Handle: option to change the height, measured from the bottom
- Glass Thickness: option to change the panel thickness

Dimensions Glass

- Automatic calculations of the height and width of the glass
- Automatic calculations of the surface of the glass

DIMENSION PARAMETERS

Building Connections

Building connections differ between countries. Reynaers BIM models include parametrical building connection information.

- Wall Exterior Width: distance between front of the wall and front of the element
- Rebate Wall_Window: Distance between window and outside wall
- Offset Wall Ext Int: Distance between inside- and outside wall
- Offset Bottom Building Connection: This is the same as the offset wall Ext Int but specific for the bottom connection
- Joint Width: Distance between the inside of the outside wall and the front of the window profile

DETAIL LEVELS

3 levels of detail

- Coarse
- Medium
- Fine



COARSE



MEDIUM



FINE

OTHER PARAMETERS

Graphical parameters

Plan View Location: option to define the wanted plan view

Section View Location: option to define the wanted section view

Material and Finishes

Materials for the profiles, the handles and the panel can be chosen.

Reynaers materials

The most popular RAL colours Aluminium_RAL7016 is already predefined but can be changed if necessary.

For the panel standard glass is predefined.

Analytical Parameters

List of analytical parameters that can be used in calculations.

For example: REY Panel Surface Total, REY Panel Surface Visible, REY Uf, REY Rw, REY Air Tightness, REY Wind Load Resistance, REY Water Tightness, REY Burglar Resistance, REY Fire Resistance,...



TOGETHER FOR BETTER